

DIRECTORATE OF PORTS & INLAND WATER TRANSPORT

- **DIRECTOR NAME, PHOTOGRAPH & EXPERIENCE**

Er. Jayanta Kumar Rath,

BSc. Engg. (Civil), M.E.(Hydrology), MIAH.
Director, Ports & I.W.T., Orissa, Bhubaneswar.



Design and execution of major hydraulic structure (Mahanadi & Birupa Barrage), worked in Central Water Commission, New Delhi, wide experience and executed Hydrology Project under World Bank Scheme in Orissa and experience in Planning and formulation of Ports and Marine Hydrology.

- **CREATION AND FUNCTION OF DIRECTOR OF PORTS & I.W.T.**

The Directorate of Ports and Inland Water Transport with its headquarter at Bhubaneswar has been formed under the administrative control of Commerce & Transport (Com) Department vide Resolution No.10153/Com, Dtd.27.11.2006 for better management of Port Sector and Inland Water Transport Mechanism by merging Gopalpur Port Project & Inland Water Transport organization. The Director was also declared to function as Heads of Department under Rules of Orissa Service Code and Controlling Officer under Rules of Budget Manual. The function of the Director of Ports and Inland Water Transport as per job chart is as detailed below;

- Heads of the Department for development of Minor Ports and I.W.T. Sector for 480 Kms. of Coastline and 200 X 50 Kms. Tidal Creeks, Estuaries Rivers etc. in the State of Orissa.

- Formulation of Project proposals for development of potential Minor Port sites including Jetties, Fishing Harbours and various marine installations and facilities
- Monitor the progress and development of new Ports like Dhamara etc.
- Will be responsible to safeguard the State Government's interest under the BOO/ BOOT/ BOOST for privatization.
- To attract Private Port Developers/ Inland Sector Transport Developers (with external funding) and to avail maximum Central Assistance.
- Statutory and regulatory functions of Navigational Safety in all the declared Minor Ports, Fishing Harbours & Jetties including installation / maintenance of Navigational Aids (like Lighted Beacons, Weather Warning Signal Stations etc.)
- Formulation of Plan for speedy implementation of Coastal Shipment/ I.W.T. Net-working including processing of project proposal for private funding, obtain various statutory clearances like Environment, Forest and Defence etc.
- Privatization of Projects, its implementation with statutory & technical collaboration with suitable financing (catalytic role).
- Statutory functions of Inland Vessels Act,1917 and Indian Ports Act,1908 (revised from time to time)
- Director, Ports & I.W.T. will act as Conservator of all Minor Ports in the State.
- Quality passenger transport service to inaccessible areas with proper management, so that the income will be more than the operational cost excluding public utility aspects.
- Impact modern improved technical training to man Inland Vessels.
- Administration control, regulations and execution of marine structures, construction of Fishing Harbours/ Jetties of Fisheries & ARD Department and other Departments as per circulars of Ministry

of Agriculture, Government of India and Central Institute for Coastal Engineering for Fisheries (CICEF).

- All other statutory powers and functions exercised by C.C.E., G.P.P. and J.D., I.W.T.
- Render technical and administrative assistance for-
 - (a) Resolving bottleneck of Land, Environment, Various types of Technical Studies, Valuation of Assets and Liabilities etc.
 - (b) Development of Port based Industries like L.N.G. terminal for impart of 5 Million Ton L.N.G., Special Economic Zone, Ship Breaking Industry as well as processing of Single Buoy Mooring Terminal at Palur
- Any other work as will be assigned by Government from time to time.

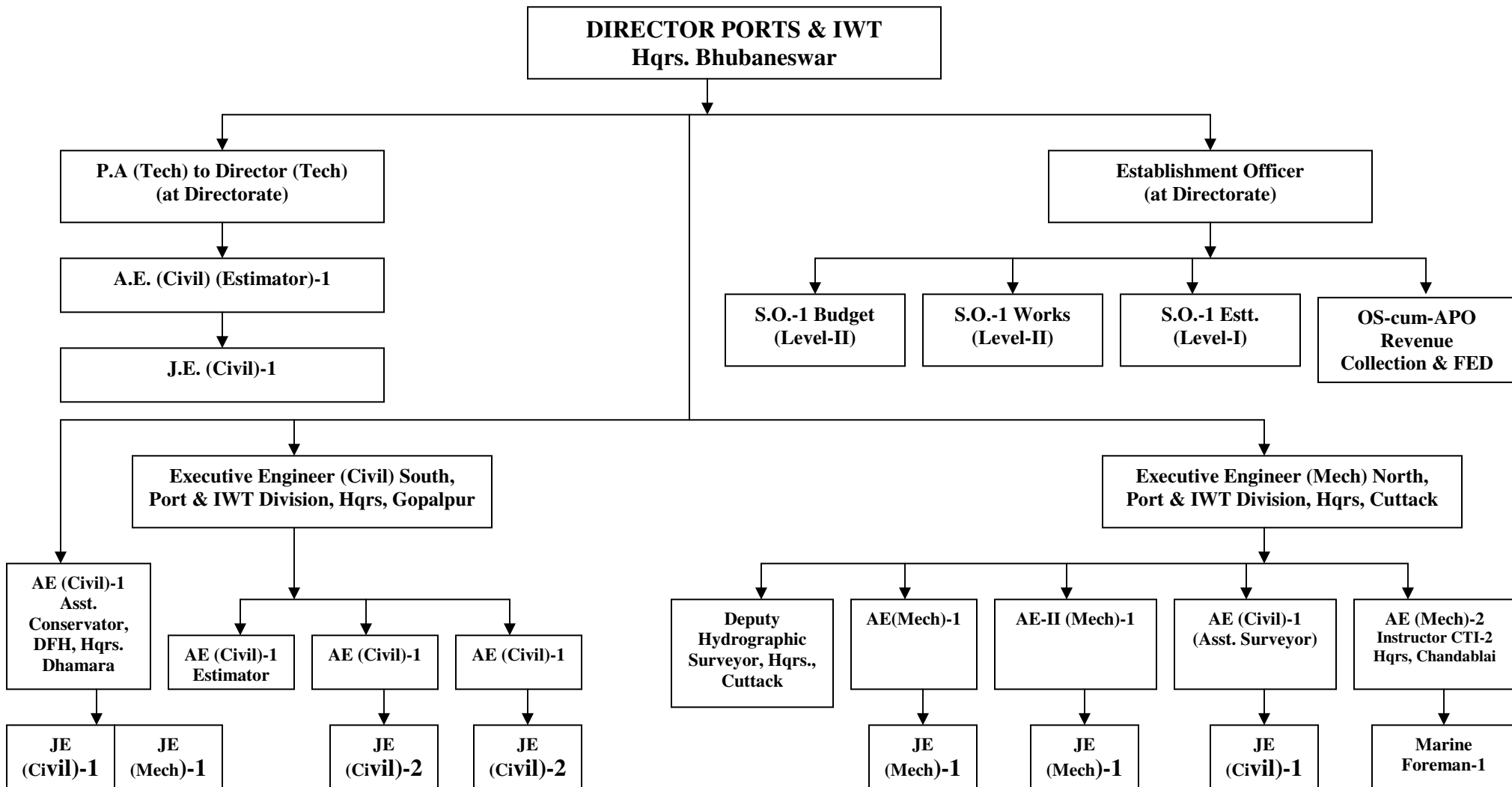
- **IMPORTANT WORKS UNDERTAKEN TILL NOW.**

(a) Port Sector:- Concessional Agreement and MOU signed with private port developers for development of Ports at Dhamara, Gopalpur, Astaranga, Chudamani and Subarnarekha Mouth. The techno-feasibility are also being examine to setup minor ports at other potential port sites in Orissa.

(b) IWT Sector:- Modernization of IWT Sector to give better transportation facilities to the passengers by inducting new motor launches, construction of passenger jetties and waiting halls at different water way terminals.

(c) C.T.I.:- This institution is imparting training to 30 nos. trainees for 10 month course duration as launch driver and serangs. Action are being taken for improvement of the institution by providing better workshop, study facilities and computer training.

ORGANIZATION CHART OF DIRECTORATE OF PORTS & IWT



DETAILED STAFF POSITION FOR DIRECTORATE OF PORTS AND INLAND WATER TRANSPORT

01.	Director, Port & IWT Rank of SE (Civil)	1	09.	Junior Engineer (Civil)	7
02.	Executive Engineer (Civil)	1	10.	Junior Engineer (Mech)	3
03.	Executive Engineer (Mech)	1	11.	Establishment Officer	1
04.	P.A. (Tech) to Director in the Rank of AEE (Civil)	1	12.	S.O. Lev-I	1
05.	Deputy Hydrographic Surveyor in the Rank of AEE (Civil)	1	13.	S.O. Lev-II	2
06.	Assistant Engineer in the Rank of AE(Civil)	6	14.	OS-cum-APO	1
07.	Assistant Engineer (Mech)	2	15.	Marine Foreman	1
08.	Instructor in the Rank of AE (Mech)	2			

ABSTRACT

Group-A	5
Group-B	15
Group-C	122
Group-D	85
TOTAL	227